

Aflibercept 8 mg for Diabetic Macular Edema: 2-Year Results of the Phase 2/3 PHOTON Trial

Diana V. Do,¹ on behalf of the PHOTON study investigators

¹Byers Eye Institute, Stanford University School of Medicine, Palo Alto, CA, USA

Note Regarding Forward-Looking Statements*

This presentation includes forward-looking statements that involve risks and uncertainties relating to future events and the future performance of Regeneron Pharmaceuticals, Inc. (“Regeneron” or the “Company”), and actual events or results may differ materially from these forward-looking statements. Words such as “anticipate,” “expect,” “intend,” “plan,” “believe,” “seek,” “estimate,” variations of such words, and similar expressions are intended to identify such forward-looking statements, although not all forward-looking statements contain these identifying words. These statements concern, and these risks and uncertainties include, among others, the nature, timing, and possible success and therapeutic applications of products marketed or otherwise commercialized by Regeneron and/or its collaborators or licensees (collectively, “Regeneron’s Products”) and product candidates being developed by Regeneron and/or its collaborators or licensees (collectively, “Regeneron’s Product Candidates”) and research and clinical programs now underway or planned, including without limitation aflibercept 8 mg; the likelihood, timing, and scope of possible regulatory approval and commercial launch of Regeneron’s Product Candidates (including aflibercept 8 mg) and new indications for Regeneron’s Products; uncertainty of the utilization, market acceptance, and commercial success of Regeneron’s Products and Regeneron’s Product Candidates (such as aflibercept 8 mg) and the impact of studies (whether conducted by Regeneron or others and whether mandated or voluntary), including the study discussed in this presentation, on any of the foregoing or any potential regulatory approval of Regeneron’s Products and Regeneron’s Product Candidates (such as aflibercept 8 mg); safety issues resulting from the administration of Regeneron’s Products and Regeneron’s Product Candidates (such as aflibercept 8 mg) in patients, including serious complications or side effects in connection with the use of Regeneron’s Products and Regeneron’s Product Candidates in clinical trials; determinations by regulatory and administrative governmental authorities which may delay or restrict Regeneron’s ability to continue to develop or commercialize Regeneron’s Products and Regeneron’s Product Candidates; ongoing regulatory obligations and oversight impacting Regeneron’s Products, research and clinical programs, and business, including those relating to patient privacy; the extent to which the results from the research and development programs conducted by Regeneron and/or its collaborators or licensees (including the aflibercept 8 mg development program discussed in this presentation) may be replicated in other studies and/or lead to advancement of product candidates to clinical trials, therapeutic applications, or regulatory approval; the potential for any license, collaboration, or supply agreement, including Regeneron’s agreements with Bayer (or its affiliated companies, as applicable), to be cancelled or terminated; the impact of public health outbreaks, epidemics, or pandemics (such as the COVID-19 pandemic) on Regeneron’s business; and risks associated with intellectual property of other parties and pending or future litigation relating thereto (including without limitation the patent litigation and other related proceedings relating to EYLEA). A more complete description of these and other material risks can be found in Regeneron’s filings with the U.S. Securities and Exchange Commission, including its Form 10-K for the year ended December 31, 2022 and its Form 10-Q for the quarterly period ended March 31, 2023. Any forward-looking statements are made based on management’s current beliefs and judgment, and the reader is cautioned not to rely on any forward-looking statements made by Regeneron. Regeneron does not undertake any obligation to update (publicly or otherwise) any forward-looking statement, whether as a result of new information, future events, or otherwise.

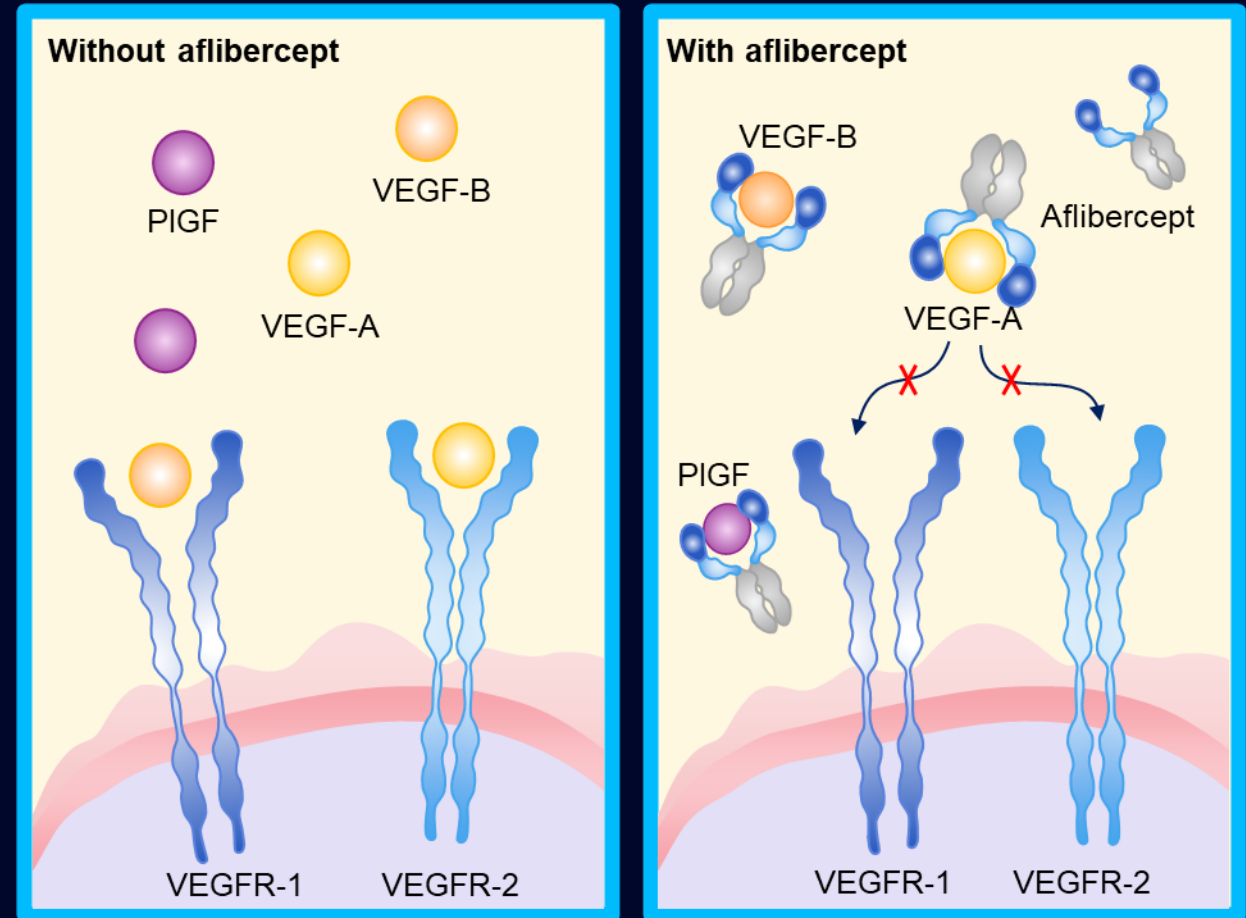
* This slide has been added for purposes of posting this presentation on Regeneron’s website.

Disclosures

- Diana V. Do is a consultant to Boehringer Ingelheim, Genentech, Kodiak Sciences, Kriya, and Regeneron Pharmaceuticals, Inc.; has received research funding from Boehringer Ingelheim, Genentech, Kriya, and Regeneron Pharmaceuticals, Inc.; and has stock options from Kodiak Sciences
- This study was sponsored by Regeneron Pharmaceuticals, Inc. (Tarrytown, NY) and co-funded by Bayer AG (Leverkusen, Germany). The sponsors participated in the design and conduct of the study, analysis of the data, and preparation of this presentation
- Study disclosures: This study includes research conducted on human patients. Institutional Review Board approval was obtained prior to study initiation

Aflibercept 8 mg

- Aflibercept is a fully human recombinant fusion protein that binds VEGF-A, VEGF-B, and PlGF, thereby inhibiting the activation of cognate VEGF receptors^{1,2}
- **Aflibercept 8 mg** is a novel intravitreal formulation, delivering a **4-fold higher molar dose** than aflibercept 2 mg in a 70- μ L injection
- Aflibercept 8 mg has demonstrated improved functional and anatomic outcomes at dosing intervals of ≥ 12 weeks in ongoing clinical trials in nAMD, DME, and DR^{3,4}



DME, diabetic macular edema; DR, diabetic retinopathy; nAMD, neovascular age-related macular degeneration; PlGF, placental growth factor; VEGF, vascular endothelial growth factor; VEGFR, vascular endothelial growth factor receptor.

1. Holash J et al. *Proc Natl Acad Sci*. 2002;99(17):11393-11398. 2. Papadopoulos N et al. *Angiogenesis*. 2012;15(2):171-185. 3. Lanzetta P. Intravitreal aflibercept injection 8 mg for nAMD: results from the phase 3 PULSAR trial. Presented at: American Academy of Ophthalmology; September 30, 2022; Chicago, IL. 4. Brown DM. Intravitreal aflibercept injection 8 mg for DME: results from the phase 2/3 PHOTON trial. Presented at: American Academy of Ophthalmology; September 30, 2022; Chicago, IL.

PHOTON Study Design

Multi-center, randomized, double-masked study in patients with DME^a

Randomized 1 (2q8) : 2 (8q12) : 1 (8q16)

Note: 2 mg arm received 5 initial monthly injections versus 8 mg arms, which received only 3 initial monthly injections

2q8

Aflibercept 2 mg every 8 weeks
after 5 initial monthly injections
n=167

8q12

8 mg every 12 weeks after
3 initial monthly injections
n=328

8q16

8 mg every 16 weeks after
3 initial monthly injections
n=163

Primary endpoint at Week 48
Mean change in BCVA (non-inferiority)

End of study at Week 96
with optional 1-year extension through Week 156

^aTreatment naïve and previously treated.
BCVA, best-corrected visual acuity; DME, diabetic macular edema.

Key Eligibility Criteria

Inclusion Criteria

- Adults (≥ 18 years of age) with type 1 or type 2 diabetes
- DME with central involvement with CRT ≥ 300 μm (or ≥ 320 μm on Spectralis) in the study eye as determined by the reading center
- BCVA of 78-24 letters (Snellen equivalent 20/32-20/320) with decreased vision due to DME

Exclusion Criteria

- Active PDR in the study eye
- PRP or laser photocoagulation in the study eye within 12 weeks of screening visit
- IVT anti-VEGF treatment in the study eye within 12 weeks of screening visit
- Intraocular or periocular steroids in the study eye within 16 weeks of the screening visit

PHOTON: Dosing Schedule and Dose Regimen Modification

Primary Endpoint

	Day 1	Week 4	Week 8	Week 12	Week 16	Week 20	Week 24	Week 28	Week 32	Week 36	Week 40	Week 44	Week 48
2q8	X	X	X	X	X	o	X	o	X	o	X	o	X
8q12	X	X	X	o	o ^a	X ^a	o	o	X ^a	o	o	X ^a	o
8q16	X	X	X	o	o ^a	o ^a	X ^a	o	o	o ^a	X ^a	o	o

	Week 52	Week 56	Week 60	Week 64	Week 68	Week 72	Week 76	Week 80	Week 84	Week 88	Week 92	Week 96
2q8	o	X	o	X	o	X	o	X	o	X	o	o
8q12	o	X ^{a, b}	o	o	X ^{a, b}	o	o	X ^{a, b}	o	o	X ^{a, b}	o
8q16	o	X ^{a, b}	o	o	o	X ^{a, b}	o	o	o	X ^{a, b}	o	o

^aDRM: Interval Shortening During Years 1 and 2

- **Criteria for interval shortening:**
 - >10-letter loss in BCVA from Week 12 due to persistent or worsening DME **AND**
 - >50 μm increase in CRT from Week 12
- Patients who met DRM criteria had dosing intervals shortened to Q8 at **Weeks 16 and 20** or by 4-week increments from **Week 24**
 - The minimum interval was Q8

^bDRM: Interval Extension During Year 2

- **Criteria for interval extension:**
 - <5-letter loss in BCVA from Week 12 **AND**
 - CRT <300 μm (or <320 μm on Spectralis)
- Patients who met DRM criteria from **Weeks 52 through 96** had dosing intervals extended by 4-week increments
 - The maximum assigned interval was Q24

Figure does not reflect all dosing options once a patient's interval is shortened or extended. Stippled boxes = initial treatment phase; X = active injection; o = sham injection. DRM, dose regimen modification.

Patient Disposition at Week 96

	2q8	8q12	8q16	Total
N (FAS/SAF)	167	328	163	658
Completion rate at Week 48 (%)	94.0%	91.2%	95.1%	92.9%
Completion rate at Week 96 (%)	83.2%	77.8%	84.8%	80.9%
Discontinuation rate at Week 96 (%)	16.8%	22.2%	15.2%	19.1%
Reasons for discontinuation (%)				
Consent withdrawal	5.4%	5.2%	4.9%	5.2%
Death	5.4%	5.5%	3.0%	4.8%
Lost to follow-up	3.0%	5.8%	4.3%	4.7%
Decision by the investigator	1.2%	2.7%	1.8%	2.1%
Adverse event	0.6%	2.7%	1.2%	1.8%
Noncompliance with protocol	1.2%	0.3%	0	0.5%

Baseline Demographics

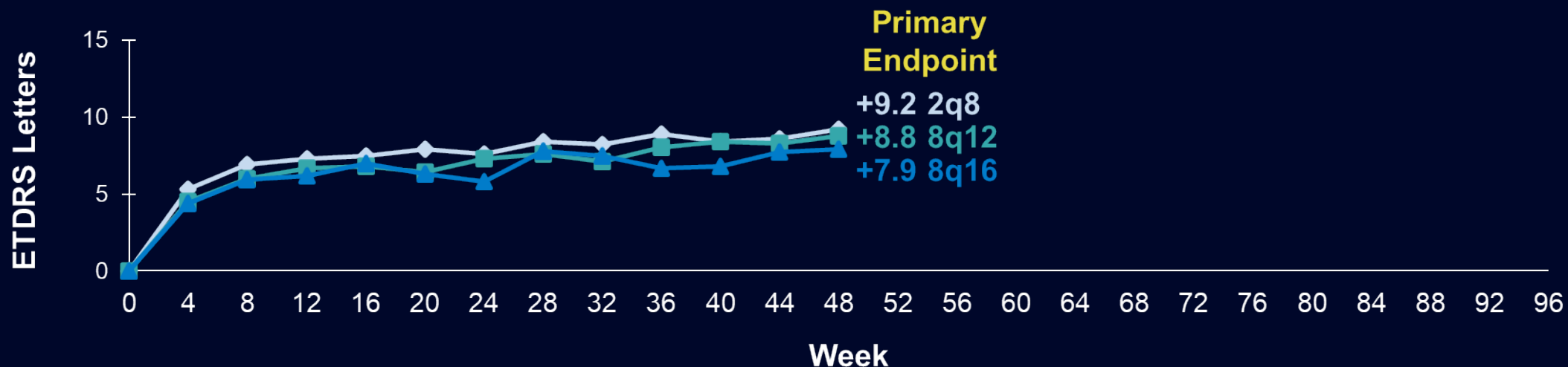
	2q8	8q12	8q16	Total
N (FAS/SAF)	167	328	163	658
Age (years)	63.0 (9.8)	62.1 (11.1)	61.9 (9.5)	62.3 (10.4)
Female (%)	44.9%	36.0%	39.3%	39.1%
Race (%)				
White	67.1%	70.4%	78.5%	71.6%
Black or African American	10.8%	10.7%	5.5%	9.4%
Asian	18.0%	14.6%	14.1%	15.3%
Other	2.4%	3.0%	0.6%	2.4%
Not reported	1.8%	1.2%	1.2%	1.4%
Hispanic or Latino (%)	18.6%	16.5%	20.9%	18.1%
Duration of diabetes (years)	15.9 (10.0)	15.1 (10.0)	15.7 (10.7)	15.5 (10.2)
Hemoglobin A1c (%)	8.1 (1.5)	7.9 (1.5)	7.8 (1.5)	8.0 (1.5)
History of hypertension (%)	77.8%	77.4%	79.8%	78.1%
BMI (kg/m ²)	29.9 (6.5)	30.4 (6.2)	31.0 (6.1)	30.5 (6.2)

Data are mean (SD) unless otherwise indicated.
 BMI, body mass index; FAS, full analysis set; SAF, safety analysis set; SD, standard deviation.

Baseline Characteristics of the Study Eye

	2q8	8q12	8q16	Total
N (FAS/SAF)	167	328	163	658
BCVA (ETDRS letters)	61.5 (11.2)	63.6 (10.1)	61.4 (11.8)	62.5 (10.9)
Snellen equivalent	20/63	20/50	20/63	20/63
20/32 (>73 to 78 letters)	12.0%	18.0%	14.1%	15.5%
20/40 or worse (≤73 letters)	88.0%	82.0%	85.9%	84.5%
CRT (μm)	457.2 (144.0)	449.1 (127.4)	460.3 (117.8)	454.0 (129.5)
Prior treatment for DME (%)	44.3%	43.6%	43.6%	43.8%
DRSS categories (%)				
Better or equal to Level 43	62.9%	60.1%	65.6%	62.2%
Level 47 or worse	31.7%	34.5%	28.2%	32.4%
Missing/Ungradable	5.4%	5.5%	6.1%	5.6%

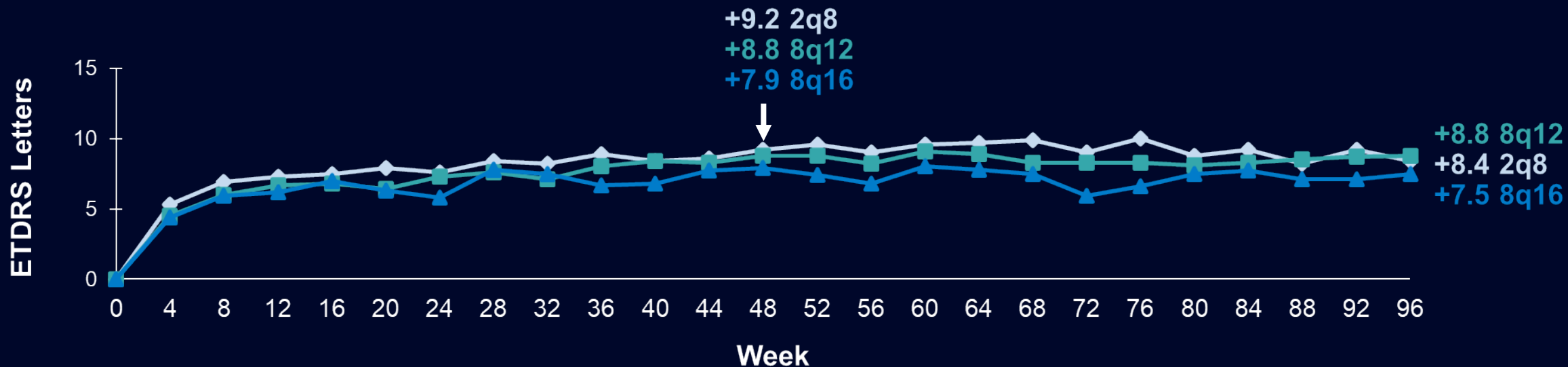
Mean Change in BCVA at Week 96



	LS mean change from BL at Week 48 (MMRM)	Diff. in LS means vs. 2q8	2-sided 95% CI	1-sided test for non-inferiority at 4-letter margin
2q8	8.7			
8q12	8.1	-0.6	-2.3, 1.1	p < 0.0001
8q16	7.2	-1.4	-3.3, 0.4	p = 0.0031

Data shown in the figure represent observed values (censoring data post-ICE); FAS: 2q8 n=167; 8q12 n=328; 8q16 n=163 (at baseline). BL, baseline; ICE, intercurrent event; LS, least squares; MMRM, mixed model for repeated measures.

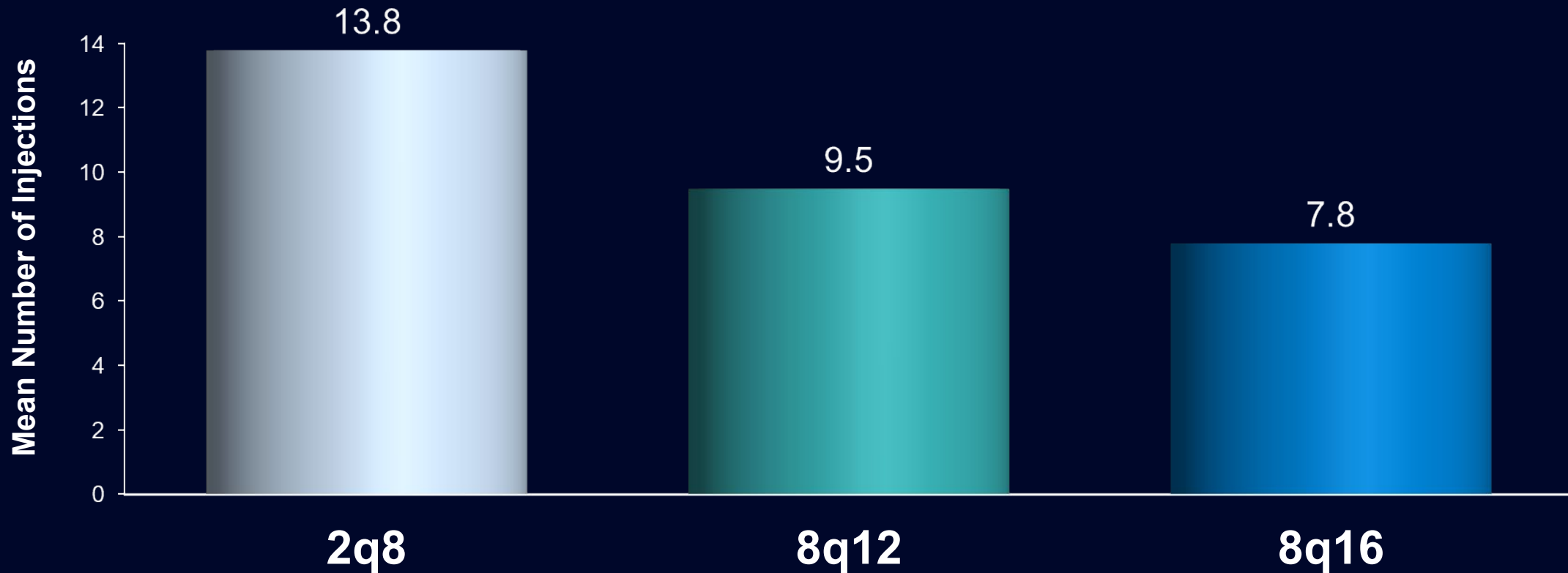
Mean Change in BCVA at Week 96



	LS mean change from BL at Week 96 (MMRM)	Diff. in LS means vs. 2q8	2-sided 95% CI	1-sided test for non-inferiority at 4-letter margin
2q8	7.7			
8q12	8.2	+0.5	-1.6, 2.5	p < 0.0001
8q16	6.6	-1.1	-3.3, 1.1	p = 0.0044

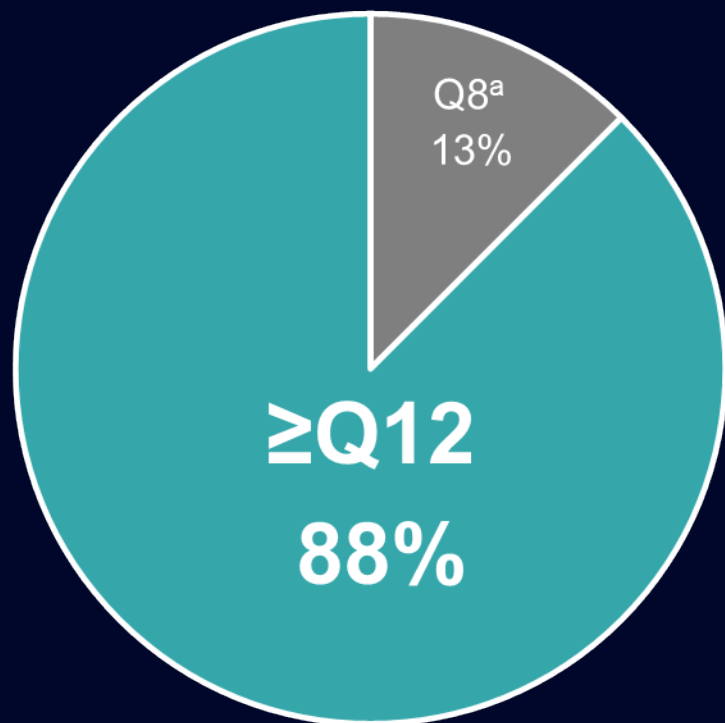
Data shown in the figure represent observed values (censoring data post-ICE); FAS: 2q8 n=167; 8q12 n=328; 8q16 n=163 (at baseline). BL, baseline; ICE, intercurrent event; LS, least squares; MMRM, mixed model for repeated measures.

Mean Number of Injections Through Week 96

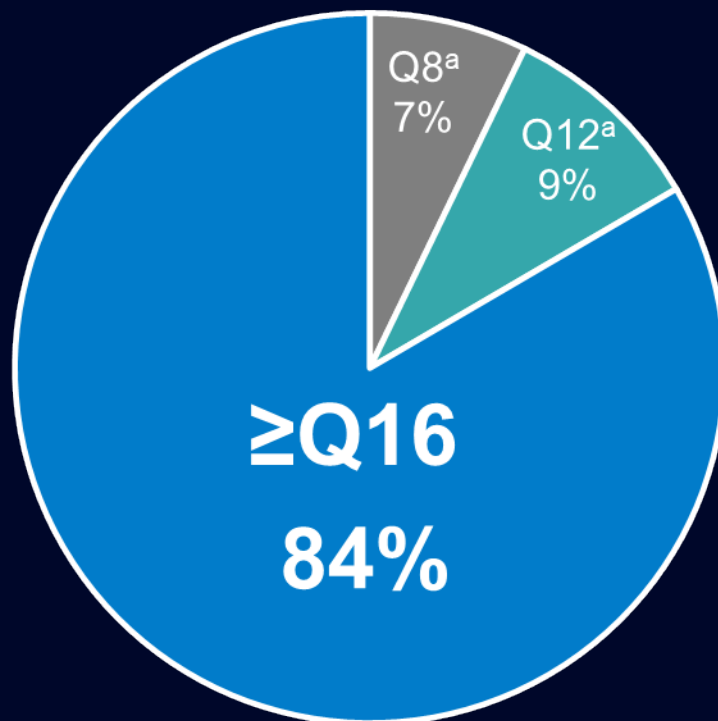


Large Majority of Aflibercept 8 mg Patients Maintained Randomized Intervals Through Week 96

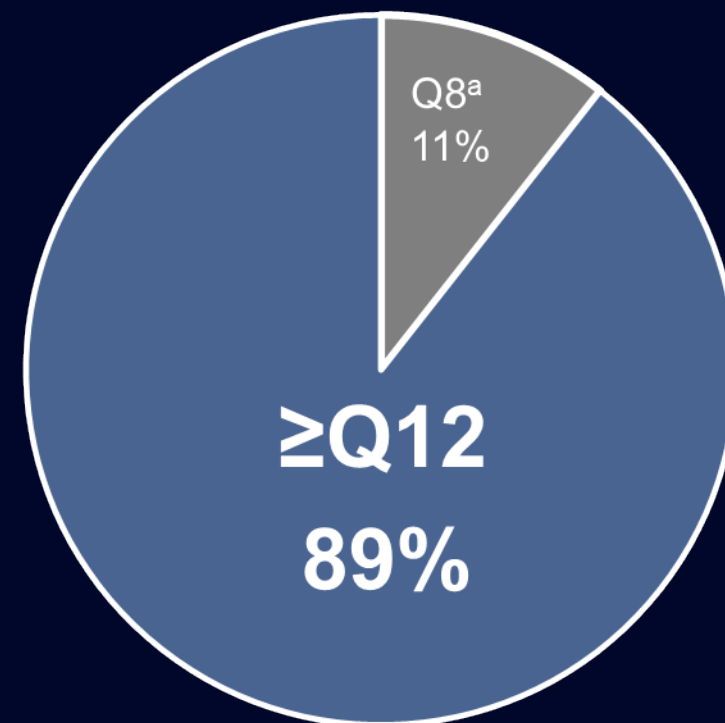
89% of 8 mg patients maintained dosing intervals ≥ 12 weeks



Randomized to **8q12** at BL
(n=256)^b



Randomized to **8q16** at BL
(n=139)^b



All 8 mg
(n=395)^b

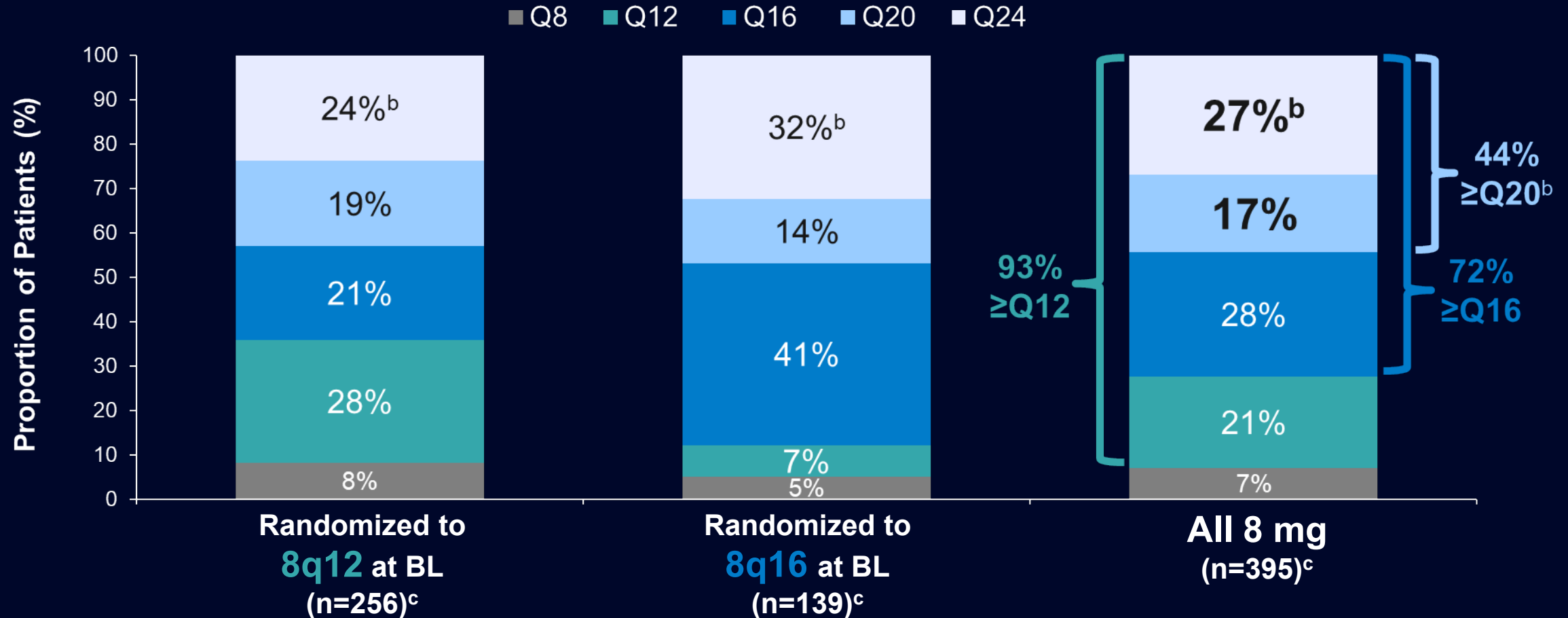
^aPatients met DRM criteria for dosing interval shortening at some point through Week 96.

^bPatients completing Week 96.

Values may not add up to 100% due to rounding.

Last Assigned Dosing Interval at Week 96

44% of 8 mg patients had assigned dosing intervals of ≥ 20 weeks at Week 96^a



^aDosing intervals were extended in Year 2 if patients had <5 -letter loss in BCVA from Week 12 **AND** CRT <300 μ m (or <320 μ m on Spectralis).

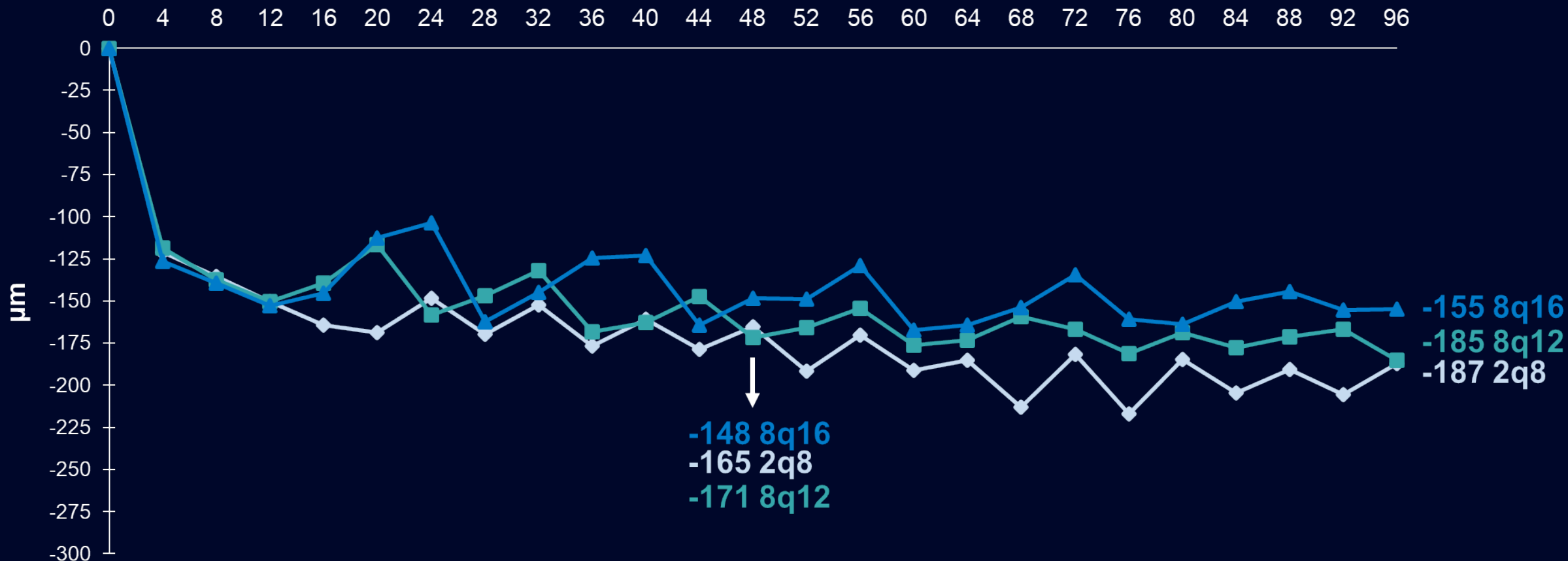
^bPatients were assigned to 24-week dosing intervals if they continued to meet extension criteria but did not have enough time to complete the interval within the 96-week study period.

^cPatients completing Week 96.

Values may not add up to 100% due to rounding.

Mean Change in Central Retinal Thickness

Week



Ocular AEs Through Week 96

	2q8	8q12	8q16	All 8 mg
N (SAF)	167	328	163	491
Patients with ≥ 1 AE (%) ^a	37.1%	43.9%	45.4%	44.4%

- Ocular AEs occurring in $\geq 5\%$ of patients in any treatment group were cataract, vitreous floaters, and conjunctival hemorrhage
- No cases of ischemic optic neuropathy were reported through Week 96

^aOcular treatment-emergent AEs in the study eye.
AE, adverse event.

Intraocular Inflammation Through Week 96

	2q8	8q12	8q16	All 8 mg
N (SAF)	167	328	163	491
Patients with ≥ 1 IOI AE (%) ^a	1.2%	1.5%	0.6%	1.2%

- Reported IOI terms were anterior chamber cell, iridocyclitis, iritis, uveitis, vitreal cells, and vitritis
- No cases of retinal vasculitis, occlusive retinitis, or endophthalmitis were reported through Week 96

^aTreatment-emergent events in the study eye.
IOI, intraocular inflammation.

Intraocular Pressure Through Week 96

	2q8	8q12	8q16	All 8 mg
N (SAF)	167	328	163	491
Patients with IOP \geq 35 mmHg at any time pre- or post-injection (%) ^a	1.2%	0.6%	0	0.4%

- Mean changes from baseline in pre-dose IOP did not exceed \pm 1 mmHg at any timepoint through Week 96 in any treatment group

^aIOP was measured in the study eye.
IOP, intraocular pressure.

Non-ocular Safety Through Week 96

	2q8	8q12	8q16	All 8 mg
N (SAF)	167	328	163	491
APTTC events ^a (%)	7.2%	6.7%	6.7%	6.7%
Hypertension events ^a (%)	16.2%	15.5%	20.9%	17.3%
Non-ocular SAEs ^a (%)	25.1%	22.9%	23.9%	23.2%
Deaths ^b (%)	5.4%	5.5%	3.1%	4.7%

^aTreatment-emergent events.

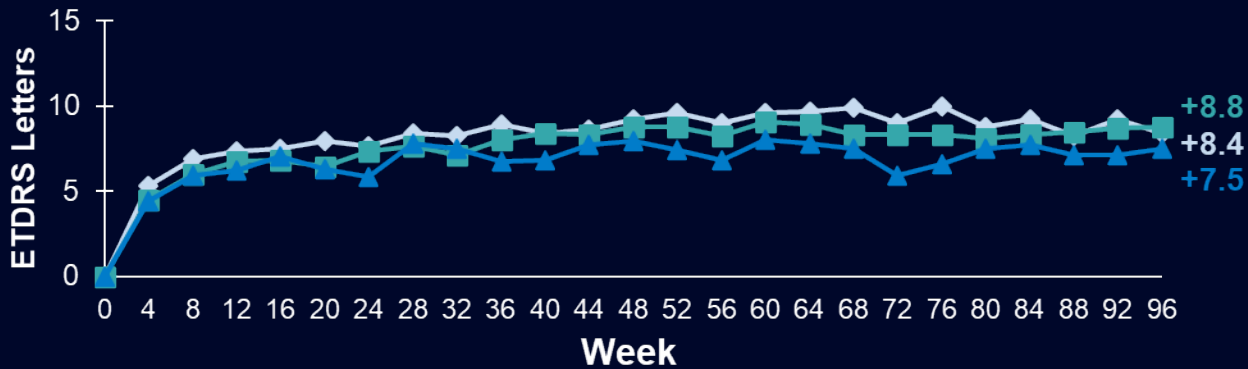
^bAll events.

APTTC, Anti-Platelet Trialists' Collaboration; SAE, serious adverse events.

PHOTON: 96-week Results

- 8q12 and 8q16 groups had non-inferior BCVA compared to 2q8 at Week 96, with up to 6 fewer injections
- Through Week 96, 89% of 8 mg patients maintained ≥ 12 -week dosing intervals
- Safety of aflibercept 8 mg was comparable to that of aflibercept 2 mg over 96 weeks

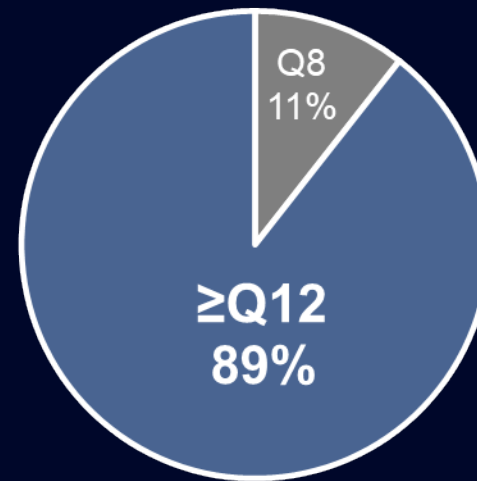
BCVA Change From Baseline^a



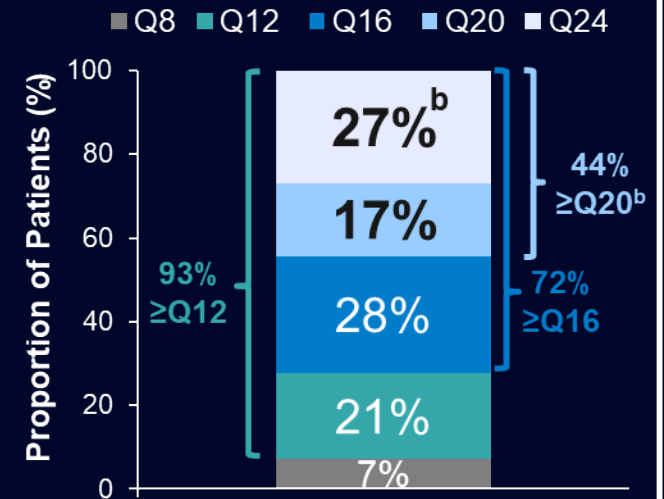
	LS mean change from BL at Week 96 (MMRM)	Diff. in LS means vs. 2q8	2-sided 95% CI	1-sided test for NI at 4-letter margin
2q8	7.7			
8q12	8.2	+0.5	-1.6, 2.5	$p < 0.0001$
8q16	6.6	-1.1	-3.3, 1.1	$p = 0.0044$

89% of 8 mg patients *maintained* ≥ 12 -week intervals through Week 96

44% of 8 mg patients had *assigned* intervals of ≥ 20 weeks at Week 96



All 8 mg
(n=395)^c



All 8 mg
(n=395)^c

^aObserved values (censoring data post-ICE); FAS: 2q8 n=167; 8q12 n=328; 8q16 n=163 (at baseline).

^bPatients were assigned to 24-week dosing intervals if they continued to meet extension criteria but did not have enough time to complete the interval within the 96-week study period.

^cPatients completing Week 96.

NI, non-inferiority.